

ODOT PROFILOGRAPH MACHINE CERTIFICATION

Date: October 22, 2019

Company or Residency: Duit Construction

Operator Name: Gregory Sneed

Operator Email: GSneed@Duitconstruction.com
(For future notifications)

Supervisor Name: John Privat

Supervisor Email: Johnp@Duitconstruction.com
(For future notifications)

Machine Manufacturer and Type AMES - 6200

Machine Serial Number #620710

RESULT

Trace No. 1 (East Bound) 35.80

Trace No. 2 (West Bound) 68.30

Signature 

Machine Ordinal _____

Ames Engineering
Profiler
Software Version 6.1.1.124
SERIAL # 620710
MODEL # Model_6200

Company = Duit Construction
Operator = Wayne Stanton
Certification # = 2815
Certification date =
District =
Route # =
Pavement # =
Pass # = 0

FILE

...bs\ODOT Certification Eastbound.ard

CALPRO SETTINGS

Band width(in.) = 0.000
Min. scallop width(ft.) = 2.00
Min. scallop height(in.) = 0.030
Scallop rounding(in.) = 0.01
Count scallops once = True
Butterworth filter(ft.) = 8.00

BUMP SETTINGS

Bump Height(in.) = 0.60
Bump Width(ft.) = 25.00
Bump Detection = On
Dip Detection = Off

ANALYSIS SETTINGS

Low-pass Filter(ft.) = 0.00
High-pass Filter(ft.) = 0.00
Reduction Length(ft.) = 528
Horizontal Scale = 600 To 1
Vertical Scale = 1 To 1
Paper Factor = 1.800

SENSOR SETTINGS

Sample rate = 12 samples/ft
Collection Speed(mph) = 7.09
Horizontal Cal. Divisor = 21
Horizontal Calibration = 317.824
Pre\Post Run Length = 200.00 ft

LEFT SENSOR FILTERS

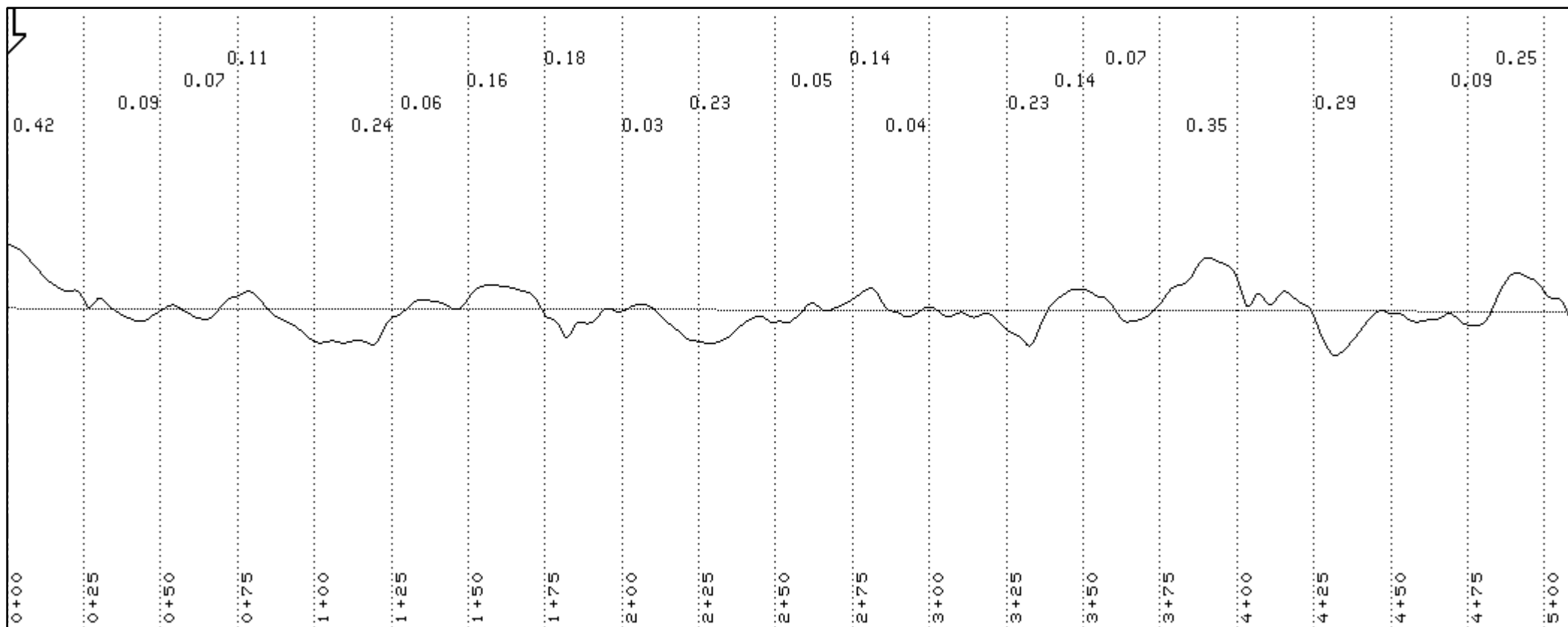
Collection Filter (ft.) = 655.20
Analog Filter = 0.10 rad.
Anti-Aliasing Filter = 0 Hertz

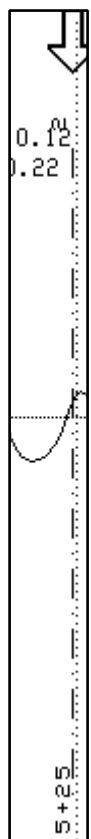
--Collection Time and Date--

Time: 11:15:56
Date: 07-06-2023

--Printed Time and Date--

Time: 07:10:28
Date: 07-11-2023





Beginning Station-> 0+00.0
Ending Station-> 5+28.0
Distance(ft.)-> 528.0
Scallop Sum Left (in.)-> 3.58
Profile Index Left (in./mile)-> 35.80

Final Analysis
Beginning Station-> 0+00.0
Ending Station-> 5+28.0
Total Distance(ft.)-> 528.0
Total Scallop Sum Left (in.)-> 3.58
Total PI 1 (in./mile)-> 35.80

<- Bump/Dip Locations Track 1 ->

Type	From(ft.)	Peak	To	Height(in)
------	-----------	------	----	------------

<- Event Summary ->

1. Start of Run Station: 0+00.0
Manual

2. End of Run Station: 5+28.1
Programed Distance

<- CalPro Summary Track 1 ->

From(ft.)	To	Dist	Count	PI(in/mi)
0+00.0	5+28.0	528.0	3.58	35.80
Total		528.0	3.58	35.80

Ames Engineering
Profiler
Software Version 6.1.1.124
SERIAL # 620710
MODEL # Model_6200

Company = Duit Construction
Operator = Wayne Stanton
Certification # = 2815
Certification date =
District =
Route # =
Pavement # =
Pass # = 0

FILE

...bs\ODOT Certification Westbound.ard

CALPRO SETTINGS

Band width(in.) = 0.000
Min. scallop width(ft.) = 2.00
Min. scallop height(in.) = 0.030
Scallop rounding(in.) = 0.01
Count scallops once = True
Butterworth filter(ft.) = 8.00

BUMP SETTINGS

Bump Height(in.) = 0.60
Bump Width(ft.) = 25.00
Bump Detection = On
Dip Detection = Off

ANALYSIS SETTINGS

Low-pass Filter(ft.) = 0.00
High-pass Filter(ft.) = 0.00
Reduction Length(ft.) = 528
Horizontal Scale = 600 To 1
Vertical Scale = 1 To 1
Paper Factor = 1.800

SENSOR SETTINGS

Sample rate = 12 samples/ft
Collection Speed(mph) = 7.39
Horizontal Cal. Divisor = 21
Horizontal Calibration = 317.824
Pre\Post Run Length = 200.00 ft

LEFT SENSOR FILTERS

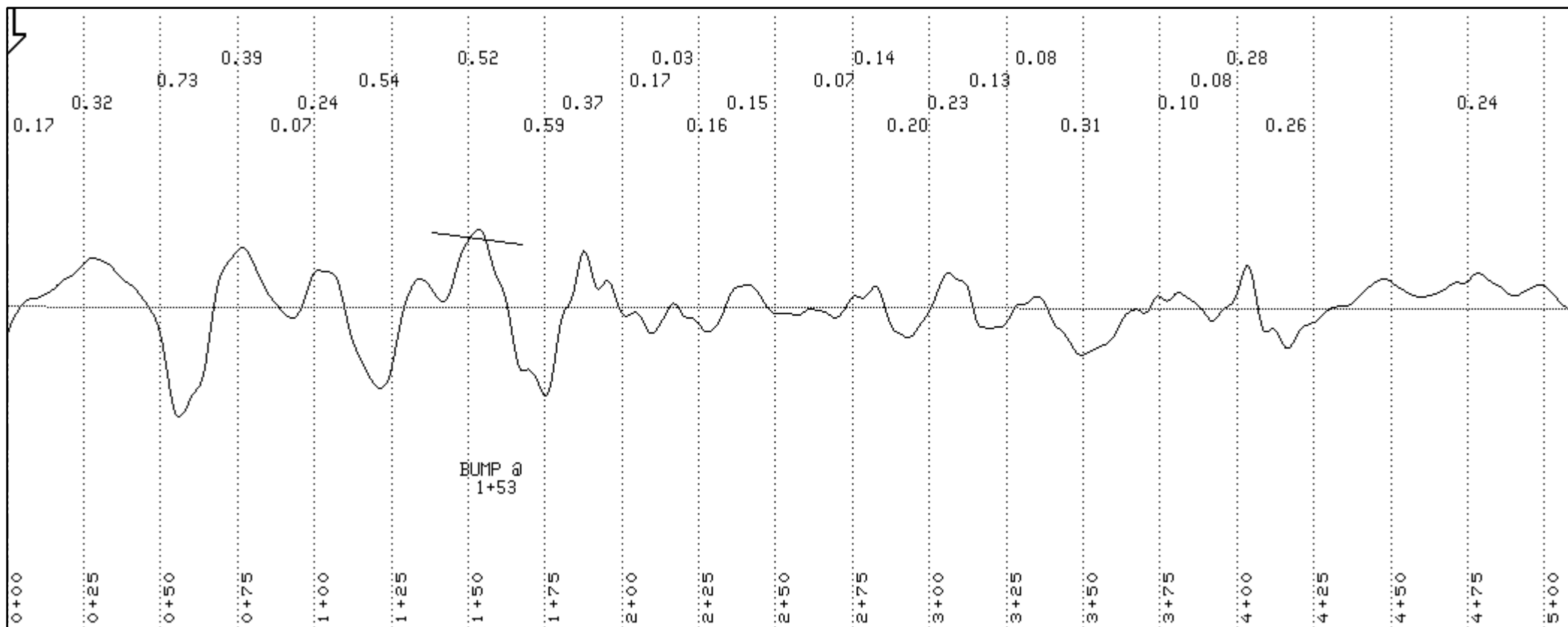
Collection Filter (ft.) = 682.89
Analog Filter = 0.10 rad.
Anti-Aliasing Filter = 0 Hertz

--Collection Time and Date--

Time: 11:25:42
Date: 07-06-2023

--Printed Time and Date--

Time: 07:12:30
Date: 07-11-2023





Beginning Station-> 0+00.0
Ending Station-> 5+28.0
Distance(ft.)-> 528.0
Scallop Sum Left (in.)-> 6.83
Profile Index Left (in./mile)-> 68.30

Final Analysis
Beginning Station-> 0+00.0
Ending Station-> 5+28.0
Total Distance(ft.)-> 528.0
Total Scallop Sum Left (in.)-> 6.83
Total PI 1 (in./mile)-> 68.30

<- Bump/Dip Locations Track 1 ->

Type	From(ft.)	Peak	To	Height(in)
Bump	1+53.0	1+53.0	1+53.0	0.02

<- Event Summary ->

1. Start of Run Station: 0+00.0
 Manual

2. End of Run Station: 5+28.1
 Programed Distance

<- CalPro Summary Track 1 ->

From(ft.)	To	Dist	Count	PI(in/mi)
0+00.0	5+28.0	528.0	6.83	68.30
Total		528.0	6.83	68.30